

# Deploying Web Services using Apache Tomcat 6.0.29

Ashwin Tumma

April 5, 2011

## 1 Preface

This document is specifically written Apache Tomcat 6.0.29 and Eclipse Helios. Eclipse Galileo doesn't have support for creating and deploying Web Services.

## 2 Using SOAP to deploy Web Services in our Transcript Generation System

We will deploy web services in our transcript generation system to allow external entities to query our system and fetch the appropriate information from the database. Following are the steps to deploy Web Services:

1. Install Apache 6.0.29
2. Eclipse Version: Eclipse Helios win323
3. Start Eclipse Helios and define your workspace
4. New-Dynamic Web Project, Enter Project name Finish, for e.g. TranscriptService
5. In the left hand side Project Explorer panel, select our project, in the Java Resources: src tab, create a package. For e.g.: transcriptService
6. In the package, place the methods that we want to serve.
7. Now, in the left hand side pane, right click on the Java file and select, New-Other-Web Services-Web Service, and click Next.
8. Pull up the Client Type dragger to Test Client option as shown in the Fig. 8
9. Select Monitor Service and click Next.
10. Methods that you want to serve through the Web Service Description Language (WSDL) will be shown. By default, all are checked. Simply click Next.
11. If the Apache Server is stopped, Eclipse will ask you to Start the server, click Start Server to start the Apache Server.
12. Eclipse will start the server, in background. Click Next.

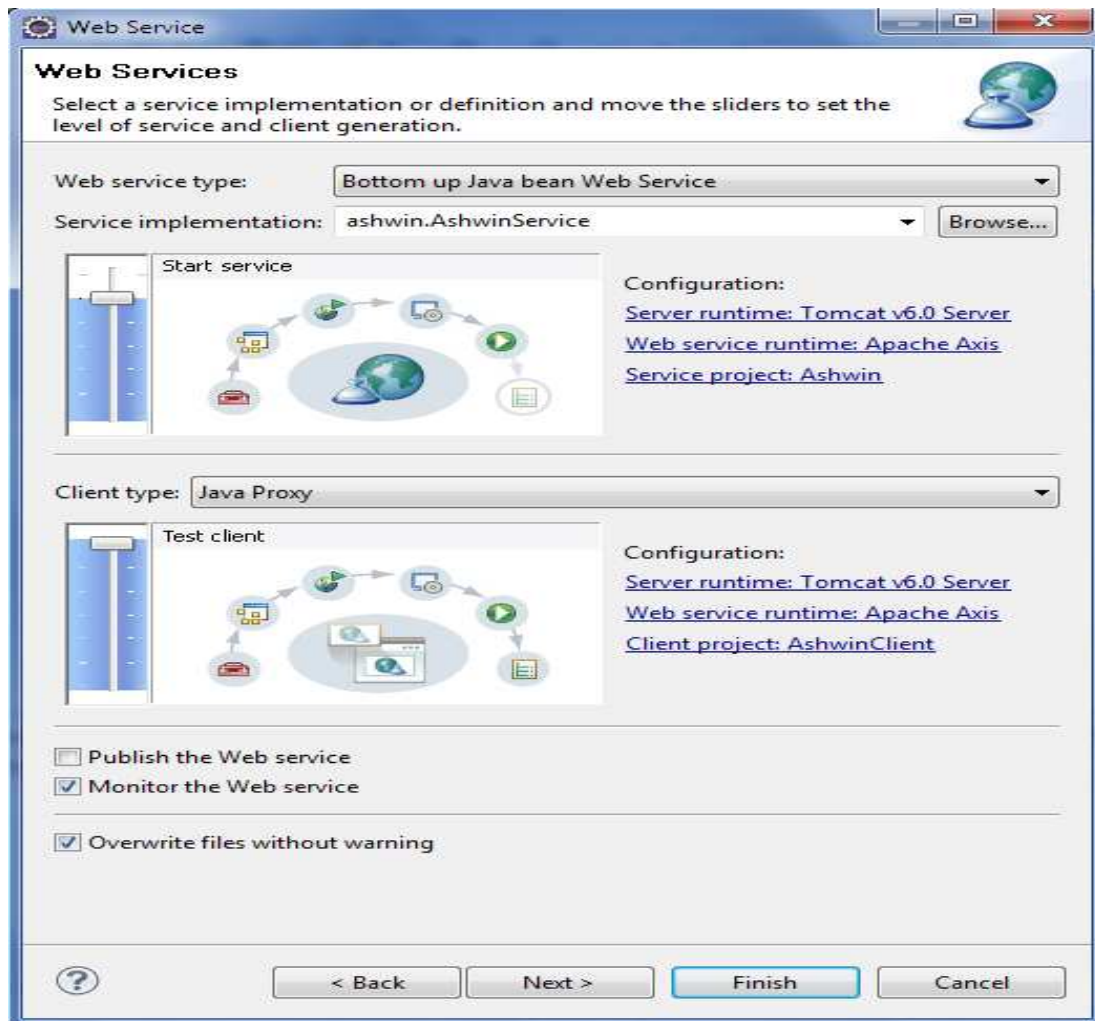


Figure 1: Test Client Options

13. Now Eclipse will ask you to select the Test facility, by default it is Web Services Explorer, simply click Next. If you want to test some of the UDDI files, Click Launch to launch the Web services explorer, but it is not mandatory.
14. Click Next on the Web Service Proxy Page.
15. Now, you can test the files. A screen as shown in Fig. 15 appears and you need to select the methods you want to serve. Uncheck those methods which you dont want to appear in the web service.
16. Click on Finish to start testing the Client.
17. An interface as shown in Fig. 17 is shown.

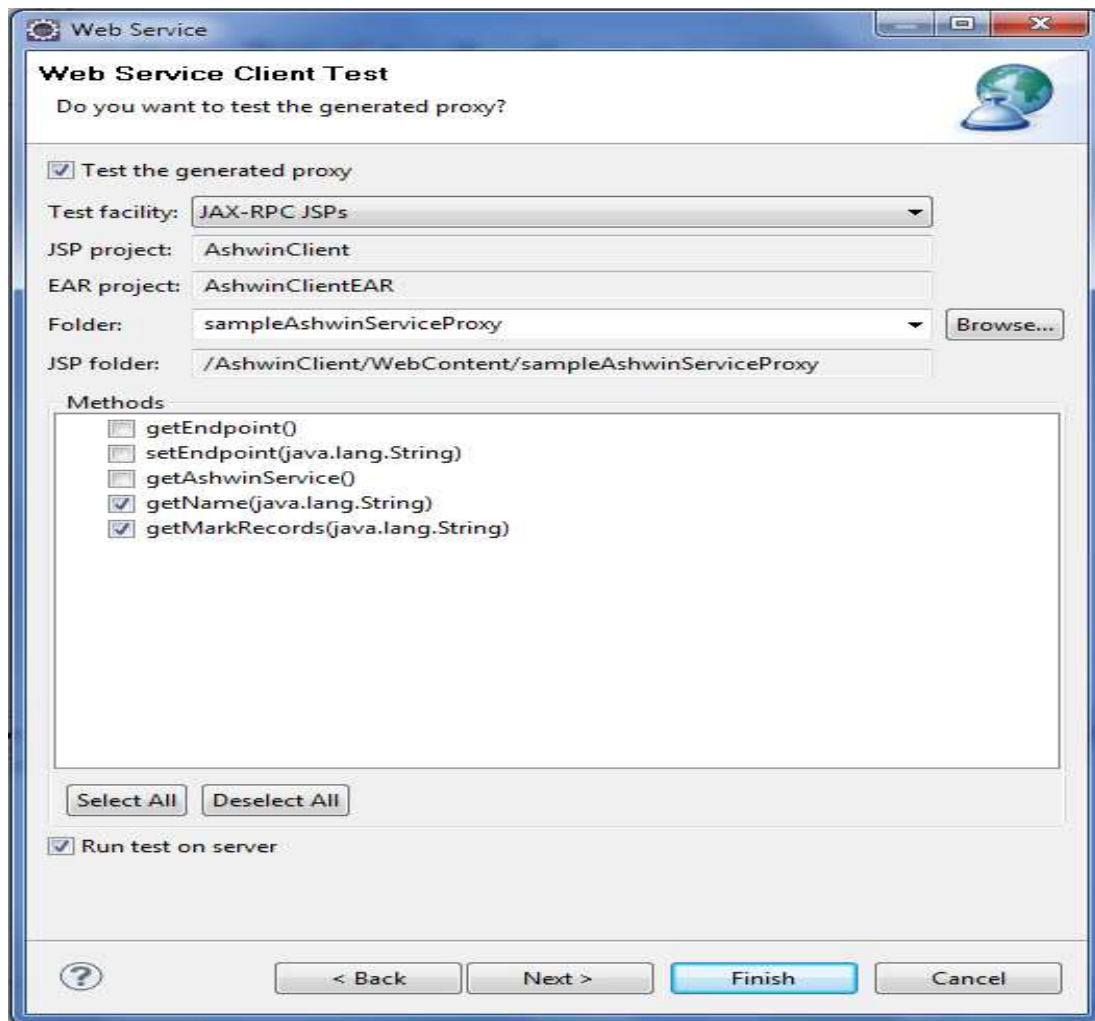


Figure 2: Options to select the methods to *serve*

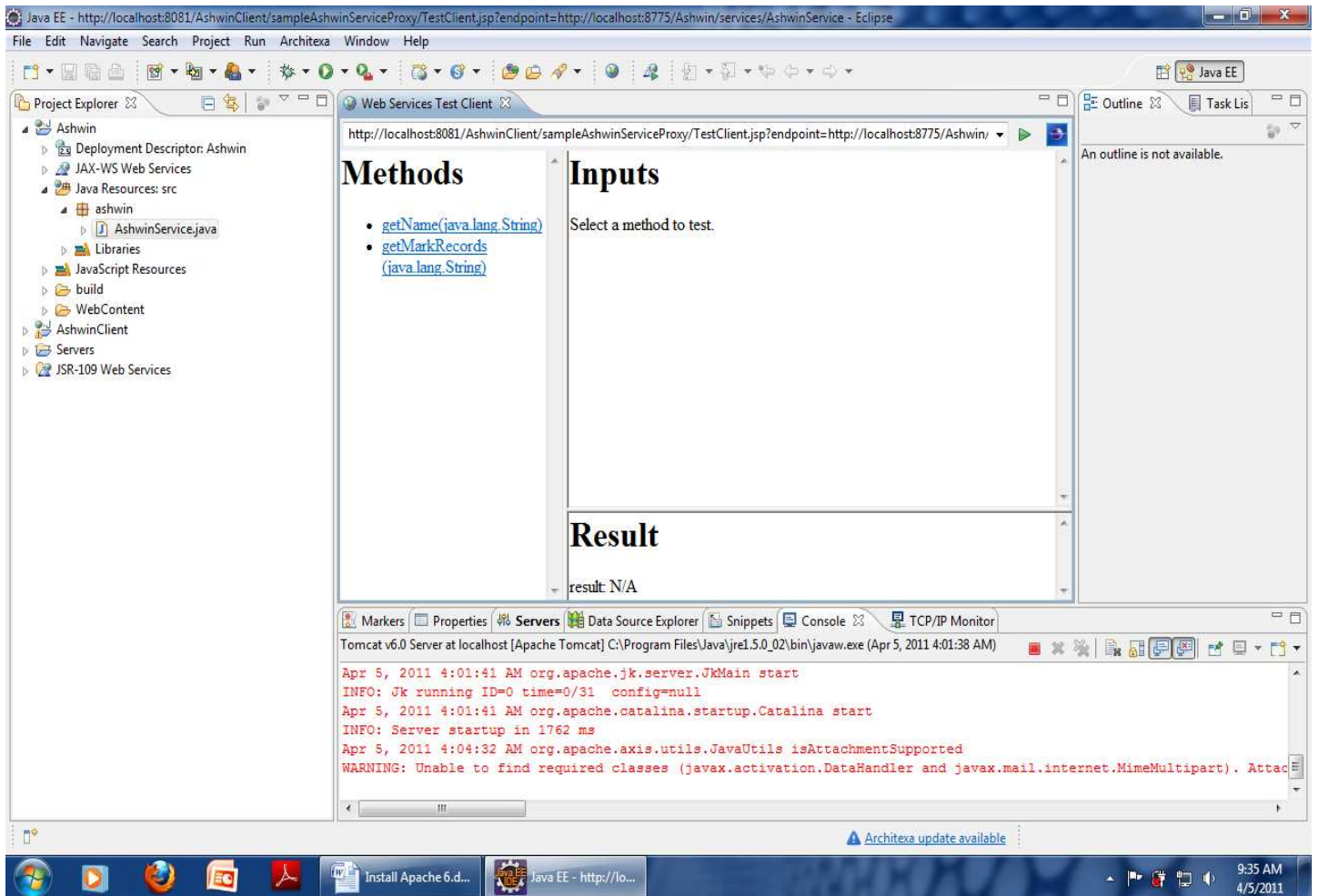


Figure 3: Interface to test the Web Client